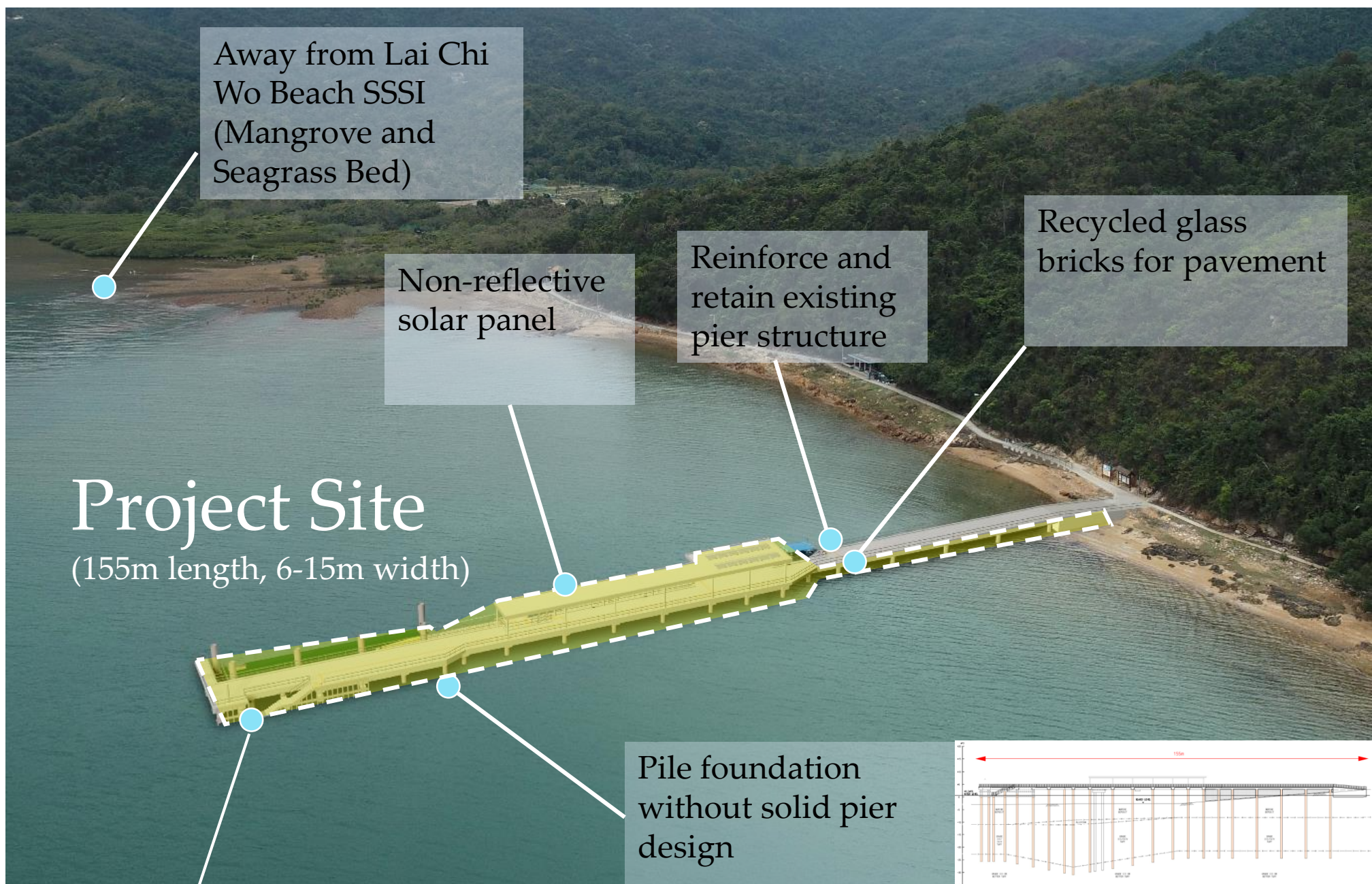


Environmental Outcome Profile

Pier Improvement at Lai Chi Wo



Use of locally-manufactured eco-materials at Pier Foundation



> Timeline

EIA Study Brief

Issued on 9 Feb 2018

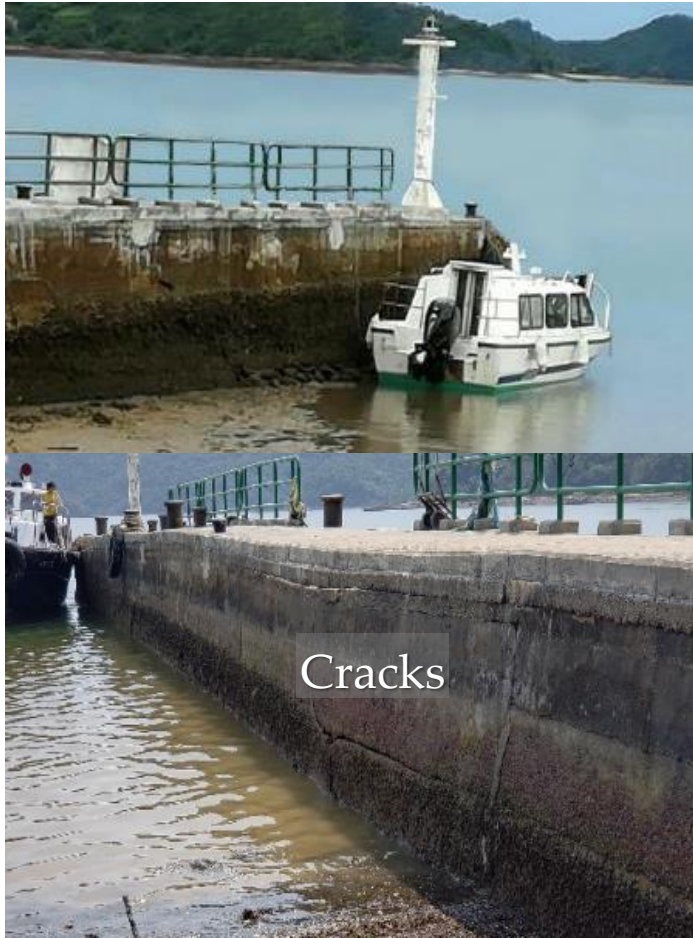
EIA Report

Approved on 29 Dec 2020

Environmental Permit

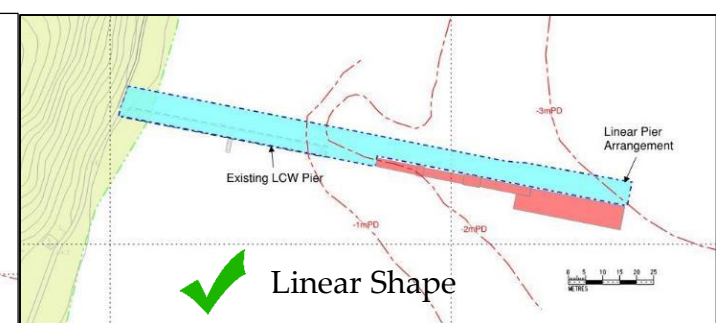
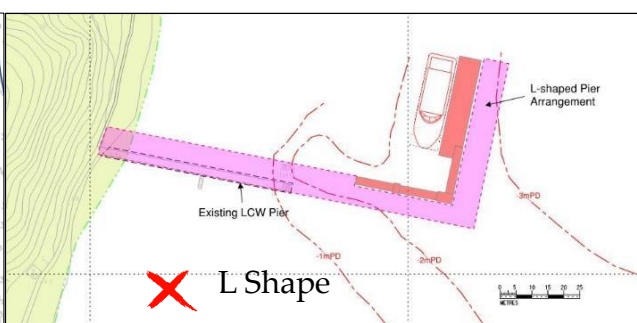
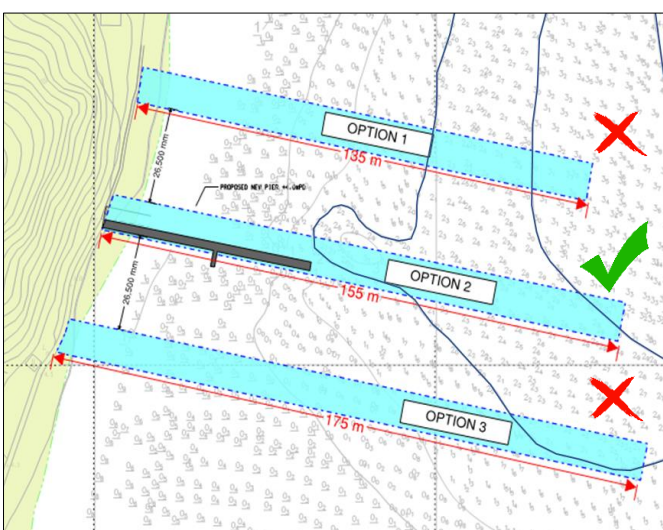
Issued on 19 Feb 2021

> Project Background



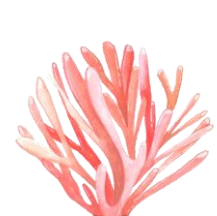
- The Project was identified by the Pier Improvement Programme (Phase 1) in 2017 Policy Address.
- The Project is needed because:-
 - ⚠ **Shallow Water Depth:** Pier head at low tide (about 0.5m deep) → Inadequate for large vessels to berth.
 - ⚠ **Substandard Condition:** Pier constructed in 50 years ago → near end of design life. Cracks are found on the side faces.

> Consideration of Alternatives



3 Pier Locations and 2 Pier Designs

>250m away from
Seagrass Bed and Mangrove



> Key Environmental Issues

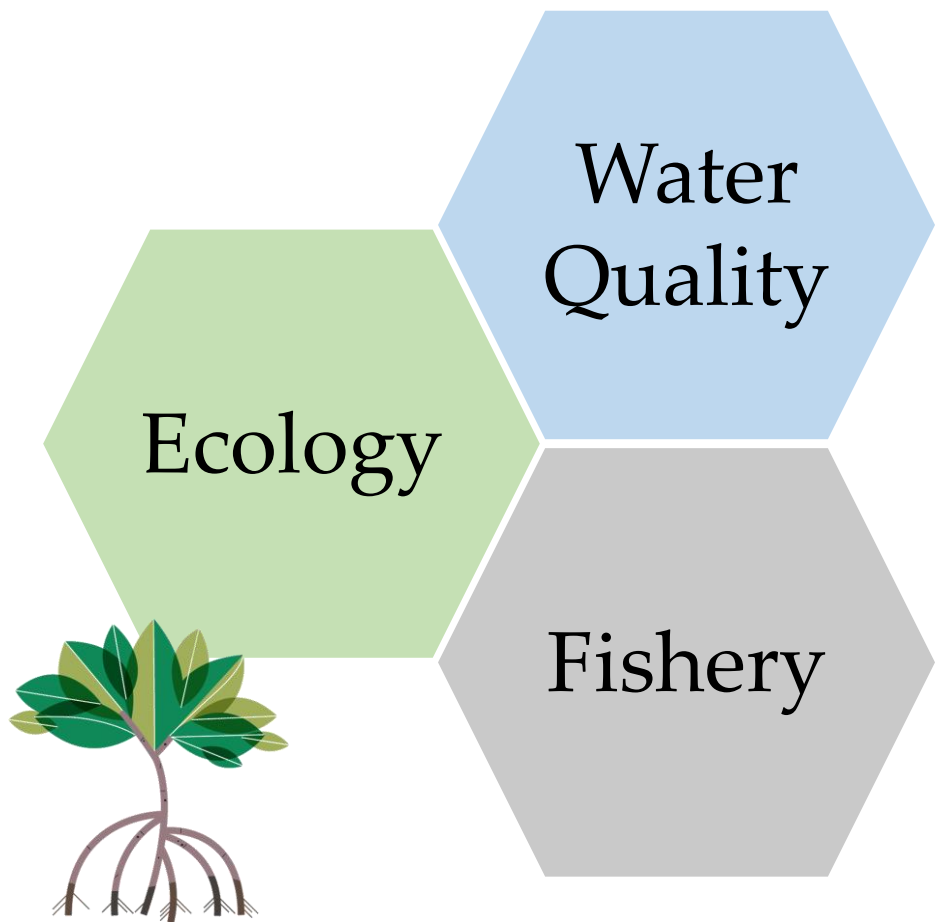
The EIA has PROTECTED...

▶ **3** coral colonies (common species) in-situ

▶ **Mangrove and Seagrass bed** in Lai Chi Wo Beach SSSI



Mangrove (>250m away)



The EIA has AVOIDED...

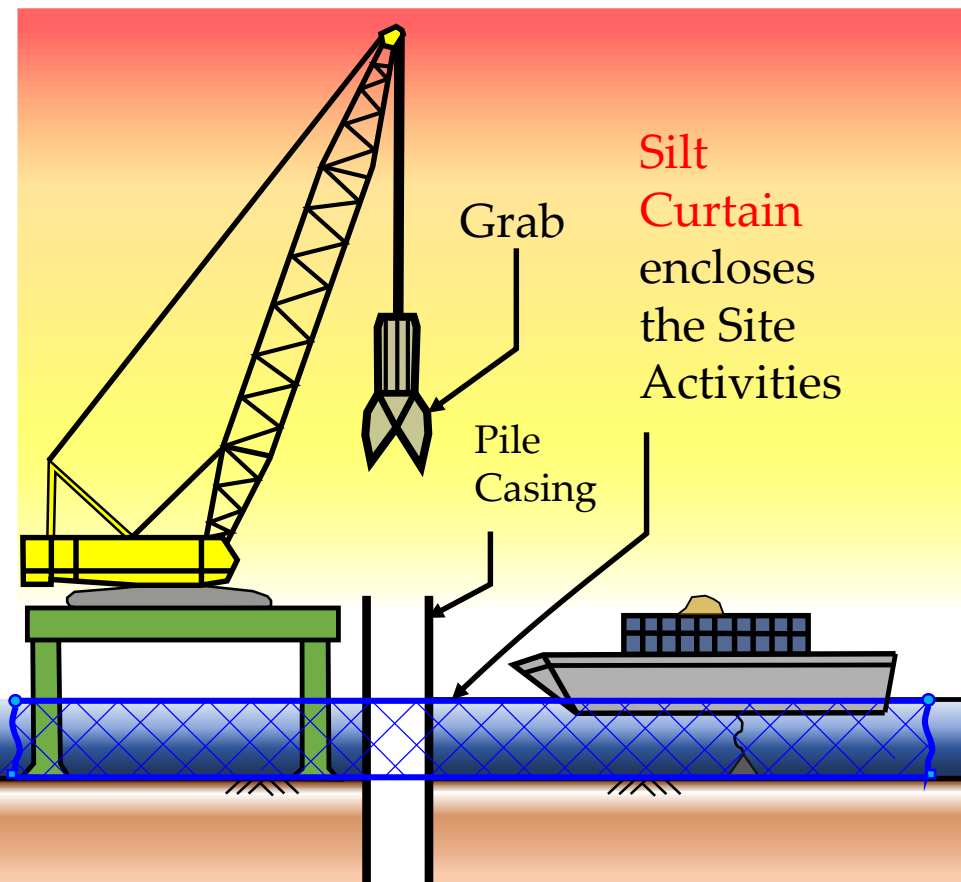
Encroachment to areas with high density coral colonies

Demolition work of existing pier in marine park

Dredging works due to the adoption of non-dredge method

Solid pier foundation to allow fish to pass through the pier

> Key Mitigation Measures



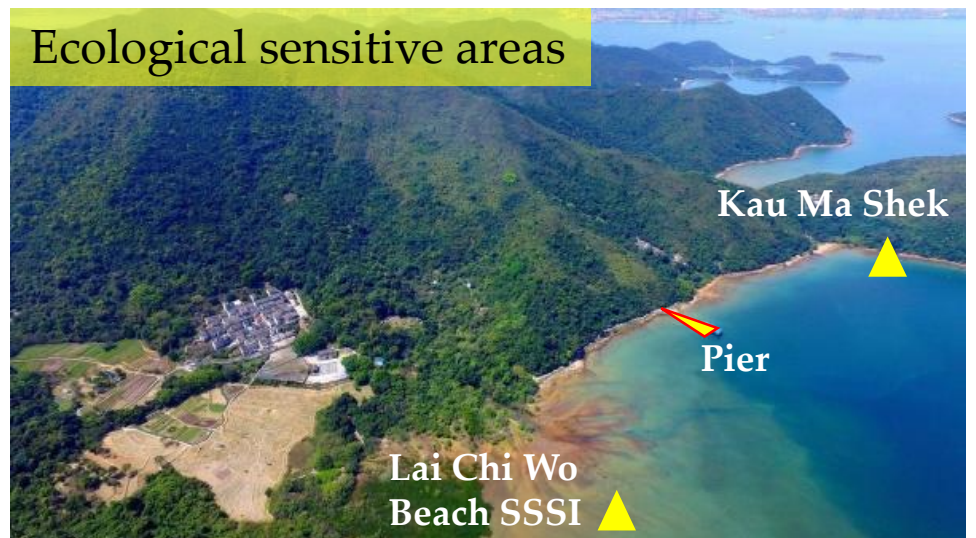
Installation and removal of the pile casing within silt curtain

Avoid dispersion of suspended solid from seabed.

- ▶ Confine suspended solid within Silt Curtain
- ▶ Limit the use of grab excavator (1 at any time)
- ▶ Preconstruction dive survey to ensure no corals of high conservation value are affected
- ▶ No construction vessels are allowed to pass through the highly ecological sensitive areas

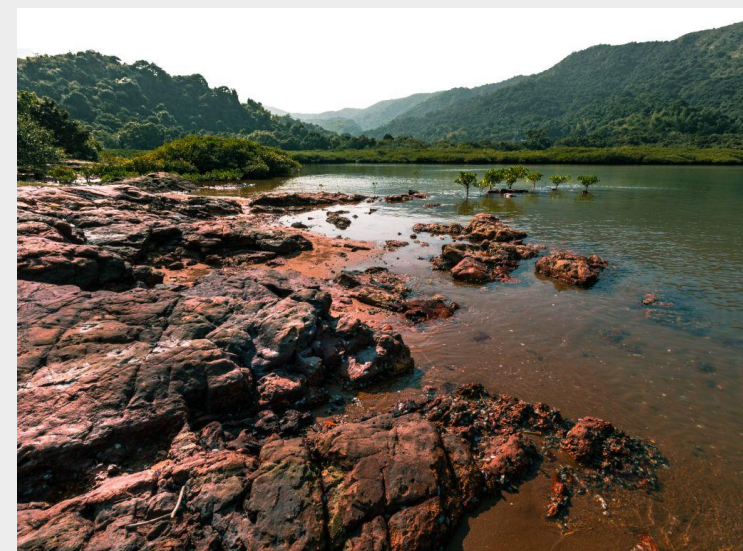


Ecological sensitive areas



Pier Design

compatible to surrounding environment, in particular the pier is located within Hong Kong UNESCO Global Geopark



Use of locally-manufactured eco-materials at Pier Foundation



Enhancement to Pier Design (Color Scheme, Materials)

